

**ITEM 43. PARKING – TIMED PARKING – DUNNING AVENUE ROSEBERY**

**TRIM RECORD NO: 2017/509208**

**RECOMMENDATION**

It is recommended that the Committee endorse the allocation of parking on the eastern side of Dunning Avenue, Rosebery as follows:

- (A) Between the points 10 metres and 15.5 metres (one car space) south of Cressy Street, as “No Parking” for a future car share space, and
- (B) Between the points 15.5 metres and 30.9 metres (three car spaces) south of Cressy Street, as “2P 8am-8pm”.

**VOTING MEMBERS FOR THIS ITEM**

<b><i>Voting Members</i></b>	<b><i>Support</i></b>	<b><i>Object</i></b>
City of Sydney		
Roads and Maritime Services		
NSW Police – Redfern LAC		
Representative for the Member for Heffron		

**DECISION**

**BACKGROUND**

The Development Consent for 29-31 Dunning Avenue, Rosebery (D/2016/77) requires the Applicant to submit a signage plan for kerbside parking arrangements for the site’s frontage along Dunning Avenue, to be referred to the Local Pedestrian, Cycling and Traffic Calming Committee.

**COMMENTS**

The City has approved the redevelopment of 29-31 Dunning Avenue, Rosebery.

The kerb space on the eastern side of Dunning Avenue, adjacent to the site, is currently unrestricted.

It is proposed to install parking restrictions to reflect the change in adjacent land use. As such, it is proposed to install “2P 8am-8pm” along the frontage of the redevelopment site. This change will comply with City’s Neighbourhood Parking Policy which recommends a two-hour parking limit as it better balances the aim of deterring commuter parking with the needs of households for visitors, carers and tradespeople.

One parking space will be signposted as “No Parking” to preserve the space until a submission is received by a car share operator. Once a submission is received, the “No Parking” space will be reallocated as “No Parking Car Share Vehicles Excepted”.

**CONSULTATION**

The Applicant must notify adjacent properties at least seven days prior to the implementation of the changes.

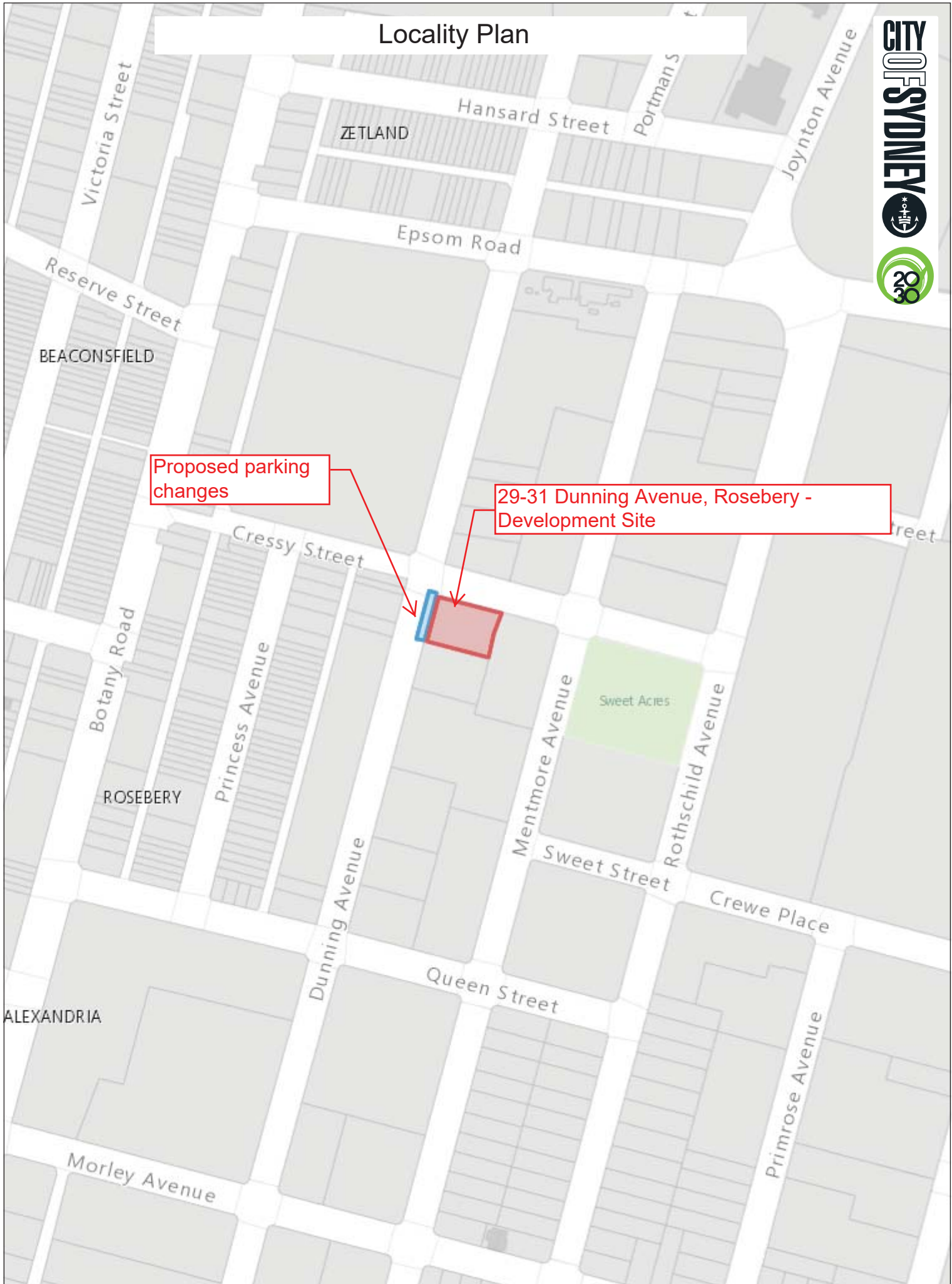
**FINANCIAL**

All costs associated with the proposal will be borne by the Applicant.

Parking – Timed Parking – Dunning Avenue Rosebery

James Nguyen, Engineering Traffic Officer

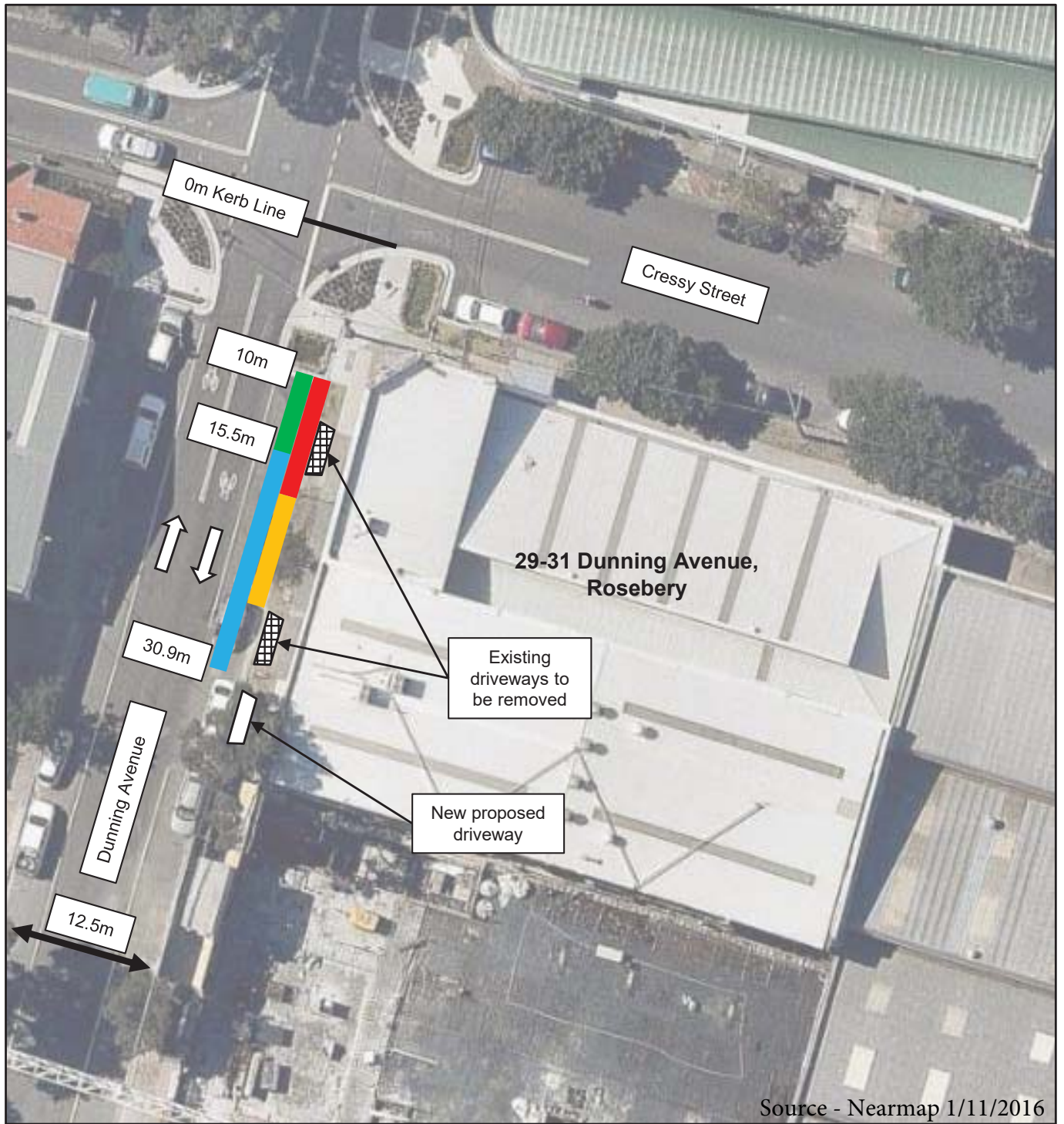
# Locality Plan



Proposed parking changes

29-31 Dunning Avenue, Rosebery - Development Site





**Legend**

- Unrestricted (Existing)
- "No Stopping" (Existing)
- "No Parking" (Proposed to reserve space for future car share)
- "2P 8am-8pm" (Proposed)

**PARKING PROPOSAL**

DUNNING AVENUE, ROSEBERY

